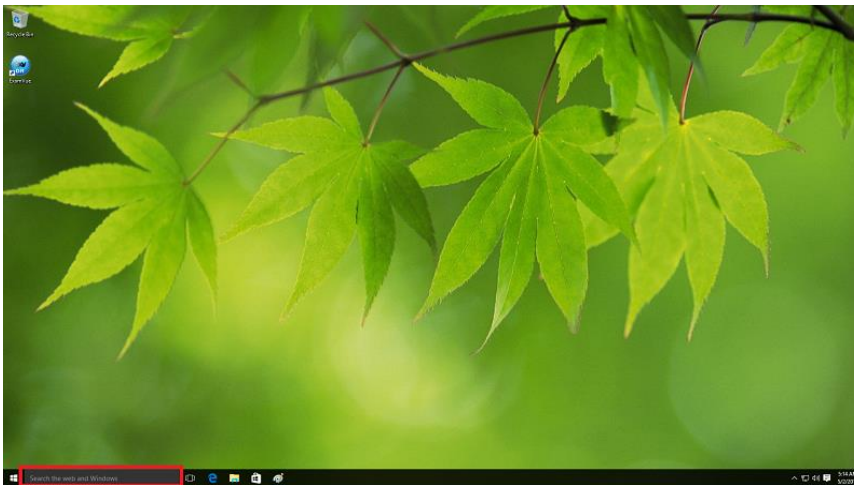


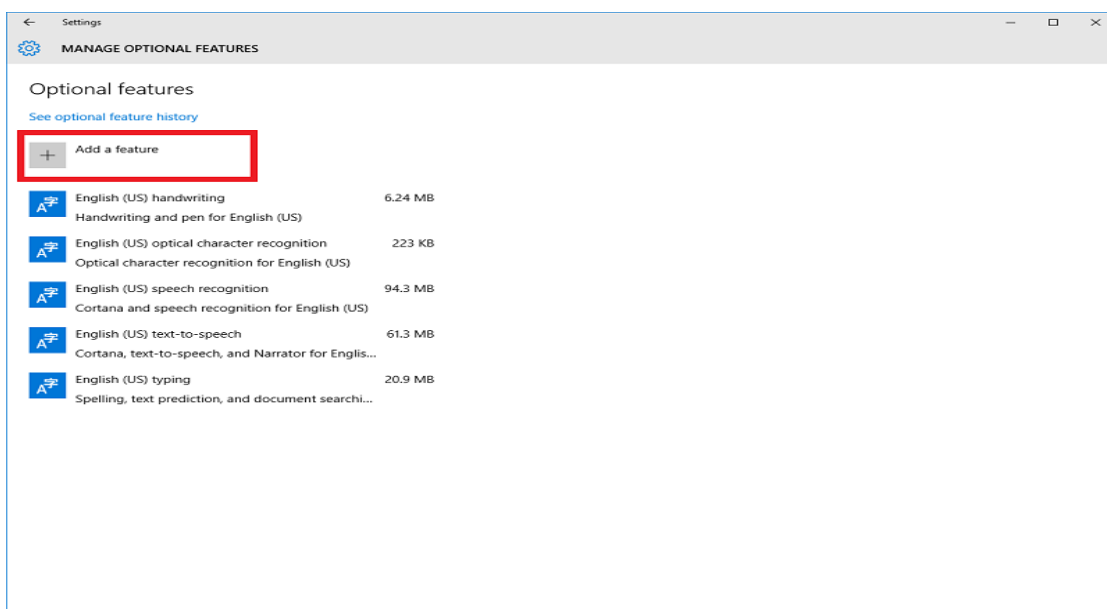
WINDOWS 10 ONLY

- Operating system needs the Korean Supplements addon.

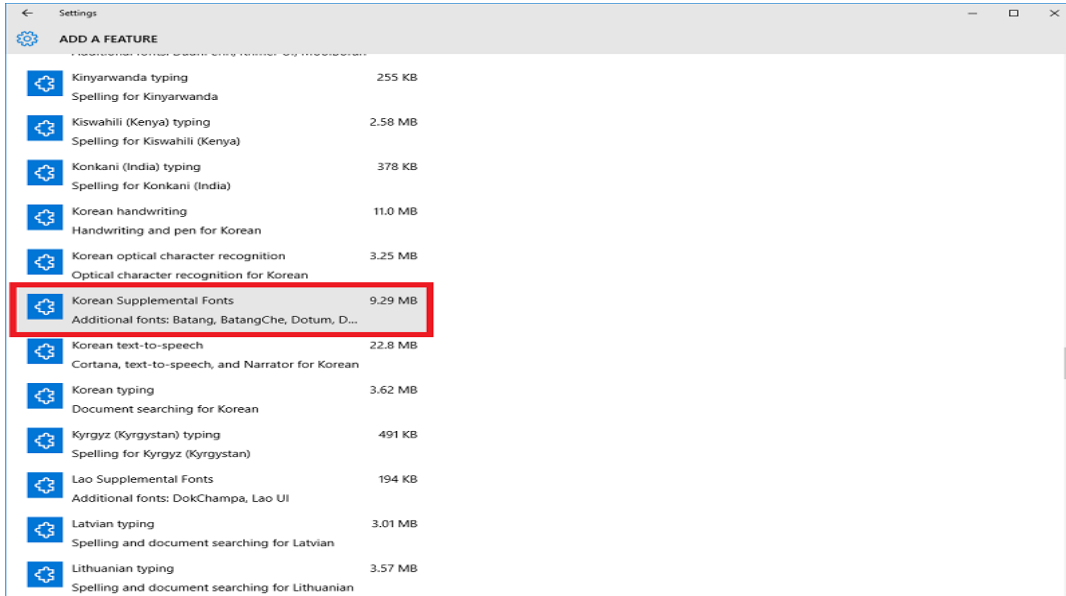
1. Input **“Manage Optional Features”** in the Search the web and Windows as shown the below figure in the RED box.



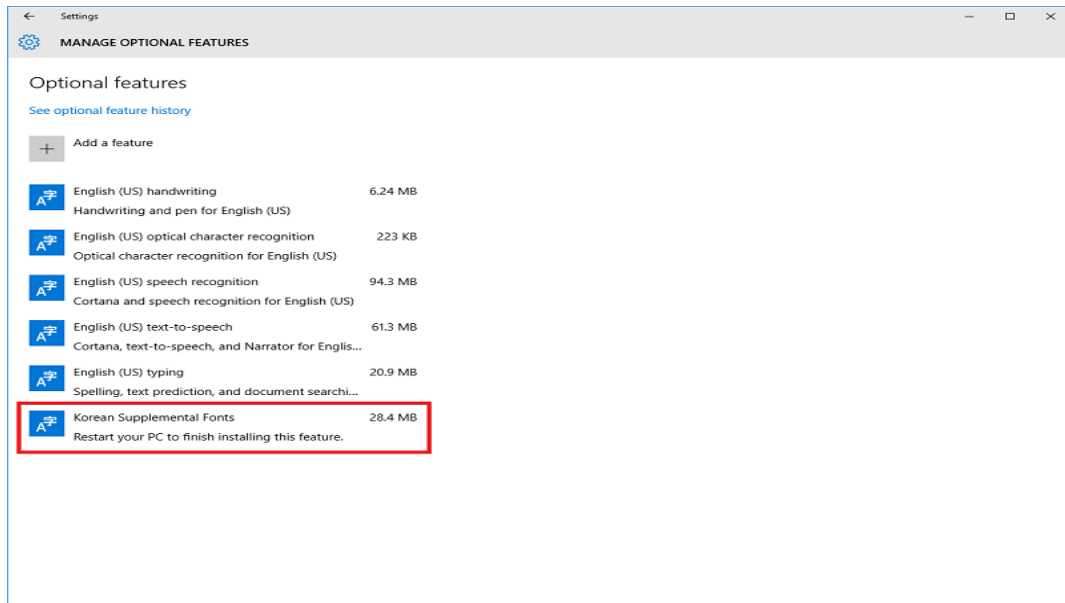
2. Check the **Add a feature** button



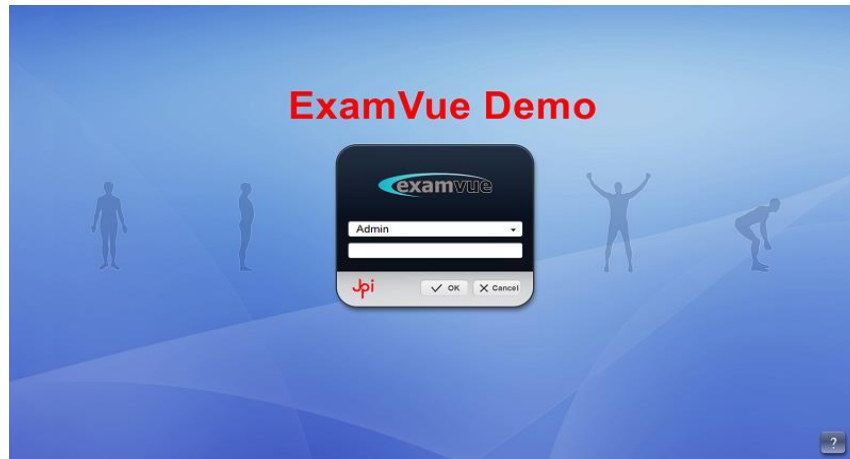
3. Check the “**Korean Supplemental Fonts**” and install it



4. After installing, you will be able to confirm the installed the “Korea Supplemental Fonts” as below



5. Run ExamVue s/w. Then the ExamVue will be working properly as shown in the below figure.



JPI Healthcare Solutions

52 Newtown Plaza Plainview N.Y , 11803

TEL: 516-513-1330 , FAX: 516-513-1331

Homepage: www.jphealthcare.com

E-mail: support@jphealthcare.com