



Our Solutions

An ergonomically designed digital X-ray system for the Veterinary Practice, the DirectVet runs on a dedicated 110V wall outlet, and is powerful enough to replace much bulkier systems that require dedicated HV power lines.

This system is ideal for existing practices looking to upgrade as well as new practices. In addition to being an easy, convenient fit for a range of spaces, this digital X-ray system allows you to hit the ground running without any special power supply modifications or construction.



Highlight Features



120 kVp
Maximum Output



300 lbs.
Heavy Duty Table
Holds Up to 300 lbs



Generator & Detector Move
Together for Positioning



Send DICOM
or JPEG Images



Email Images
for Review



User-friendly
Interface

User-Friendly Design

Simple & Fast Workflow

Convenient Diagnosis Function

Full ExamVue Duo Software Integration

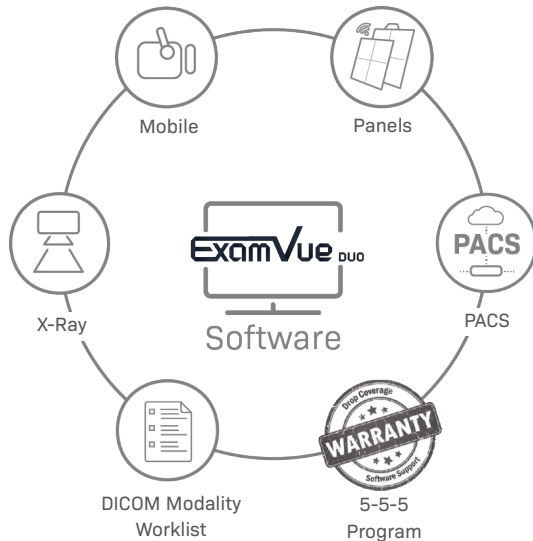
Replace the old and bulky system with the DirectVet digital X-ray system for convenient diagnosis functions, fully integrated with the ExamVue Duo Software to maximize veterinarian workflows.

- ▶ X-ray fully controlled by ExamVue Duo software
- ▶ High Frequency X-ray Generator
- ▶ Anatomical Programming
- ▶ 120 kVp Maximum Output



ExamVue Duo Acquisition Software

With state of the art and intuitive imaging tools, our **ExamVue Duo** software produces clear, concise, and quality images with even the oldest generators and larger animals. Reliable and convenient, the **ExamVue Duo** software seamlessly integrates into any professional veterinary practice.

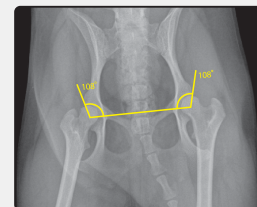


ExamVue PACS comes standard with veterinary diagnostic tools and can be expanded even further with the JPI Cloud PACS. The JPI Cloud PACS expands your access to your images to anywhere you can connect to the internet and allows for easy sharing with doctors and patients throughout your practice or anywhere in the world.

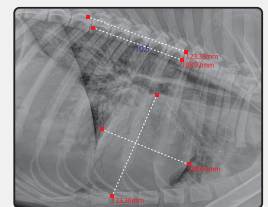
ExamVue Duo Tool-Set

Advanced Veterinary Tool-Set

- | | |
|-------------------------|------------------------|
| ▶ Axial Angle | ▶ Norberg Angle |
| ▶ Clock Face | ▶ Percent Coverage |
| ▶ Clock Face (Lat View) | ▶ Spine Label |
| ▶ Clock Face (VD View) | ▶ TPA |
| ▶ Cross Angle | ▶ Vertical Discrepancy |
| ▶ Liver Size | ▶ VHS |
| ▶ Middle Angle | ▶ VLAS |

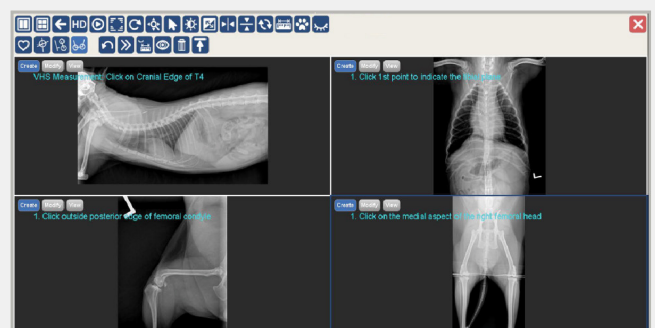


Norberg Angle



VHS (Vertebral Heart Score)

Optional Cloud PACS



Contact us:

3555 Veterans Memorial Hwy, Unit D
Ronkonkoma, NY 11779
sales@jpihealthcare.com
(516) 513-1330 Ext. 3