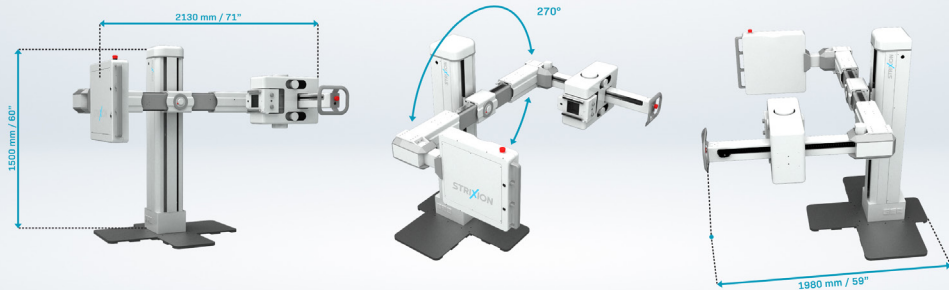


StriXion™ Smart Digital RF - T Solution



Digital Radiography, Fluoroscopy and Tomosynthesis

StriXion™ Features



Tomosynthesis



Real-time Motion Imaging



Digital Radiography



2 Slice Viewer



PACS Software



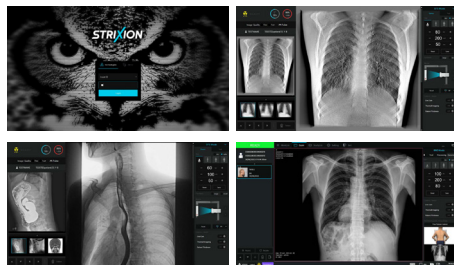
Dynamic Flat Panel Detector



DICOM Modality Worklist

ExamVue™ DTS Suite Software

The exclusive software for the StriXion™ offers realtime fluoroscopic images, X-ray images, and tomographic images through the latest trends of intuitive interfaces that reflect users' convenience. Includes the only special features available through self-developed software and provides Auto diagnosis for proactive action and tools for efficient operations.



The StriXion™ software provides high-quality images useful for diagnosis through image processing technology for each mode, enabling effective work, and improving user satisfaction by providing digital guides for professional video scan.

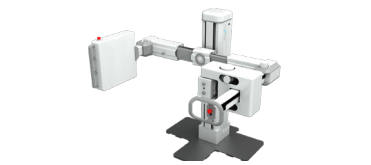
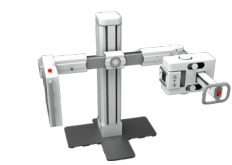
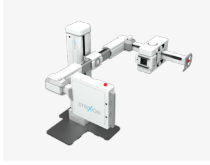
Contact us:

3555 Veterans Memorial Hwy, Unit D
Ronkonkoma, NY 11779
sales@jpihealthcare.com
(516) 513-1330 Ext. 3



www.jpihealthcare.com/detect-vet

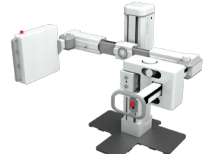
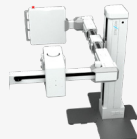
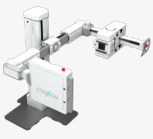
TECHNICAL SPECIFICATIONS



StriXion	Value
Power	
RAD	40kW
FLO	40kW
kVP	
RAD	40 ~ 150kV
FLO	40 ~ 125kV
DTS	40 ~ 100kV
mA	
RAD	10 ~ 320 mA
Continuous FLO	0.5 ~ 10 mA
Pulsed FLO	5 ~ 100 mA
DTS	5 - 100 mA
Max. Exposure Time	
RAD	10 ~ 20000 ms
DTS	4000 ms
Input Voltage	Single Phase (220VAC)
X-ray Tube	
Focal Spot	0.6 /1.2
Auto	Selectable Filtration (Total 4)
Detector	
Type	IGZO TFT
Pixel Array	RAD: 3072 x 3072 FLO: 3072 x 3072 (11 fps) 1536 x 1536 (30 fps) DTS: 1536 x 1536 (30 fps)
Scintillator	Direct Deposit CsI: TI
Pixel Pitch	140 µm
DQE	>57% at 1 lp / mm (CsI)
MTF	>77% at 0.5 lp / mm (CsI)
Lag	1st Frame < 0.025%
Dimension	460 x 460 x 15 mm Cassette Size (3.5kg)

StriXion	Value
Detector	
Active Image Size	427.8 x 427.8 mm
Bit depth	16 bit
Frames Per Second	5/10/30
Software	RAD/Fluoro/Slice Viewer DAP
Stand	
FD	100 cm - 150 cm / 40" - 59"
Minimum Height	35 cm / 14"
Maximum Height	152 cm / 60"
Arm Rotation	+155° to - 45°
Total Height (arm up)	256 cm / 101"
Total Width (arm sideways)	180 cm / 71"
Total Depth	150 cm / 59"
Weight	420kg / 926lbs
Vertical Movement	Motorized (foot switch)
Rotation	Manual
Power Supply	
Voltage	220V
Frequency	50/60 Hz
Power Consumption (Max)	5.5kVA
Power Consumption (Idle)	25W
Apparent Resistance	220 V~ 0.038 Ω or less
Fuse	250V~T15AH 5020 Size
Circuit breaker	415V, 63A 2 Pole
Environmental Condition	
Ambient Temperature	10° C - 40° C
Ambient Temperature (Storage)	-20° C - 55° C

TECHNICAL SPECIFICATIONS



StriXion

Value

Environmental Condition

Relative Humidity (Use)	30% - 55%
Relative Humidity (Storage)	10% - 93%
Atmospheric Pressure (Use)	700-106hPA
Atmospheric Pressure (Storage)	700-106hPA
Make	Powersite (PSG-MF40R)
Input Voltage	220V
Maximum Power	40kW
UL Certificate	DK-124238-UL
Tube	
Make	Canon (E7252X)
Target Angle	12°
Nominal Focal Spot	0.6 / 1.2
0522 Inherent Filtration	0.9 mmAl/75kV IEC 60522

StriXion

Value

Collimator

Make	Fairy (Crux210i)
Power Input	24VDC
Field Shape	Rectangular
Inherent Filtration	1.0mmAl/75kV IEC 60522
Additional Filtration	0.5 mmAl 75kV/HVL 2.7 mmAl, 0.1 mmCu 75kV/HVL 2.7 mmAl, 0.2 mmCu 75kV/HVL 2.7mmAl, 0.3 mmCu 75kV/HVL 2.7 mmAl
Weight	8.5±1.0 kg
Dimensions	203 mm × 291.5 mm ×155 mm
Workstation	
Computer	*Subject to Change (Recommended)
CPU	i7-12700
GPU	RTX 3070 Ti
RAM	16GB
Storage	1st 512GB SSD, 2nd 1TB

